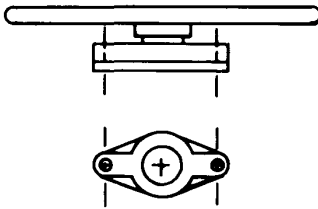


# SLIDE GATE - ACCESSORIES

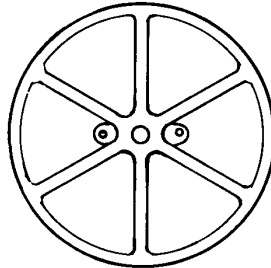
(See Bulletin FG-1C for Slide Gates)

### LIFT OPTIONS

#### TYPE 1 - HANDWHEEL LIFT



The type 1 lift is a cast iron handwheel, which turns a hex bronze nut in a cast iron thrust collar. The cast iron handwheel acts as a flywheel to aid operators in opening and closing gates.



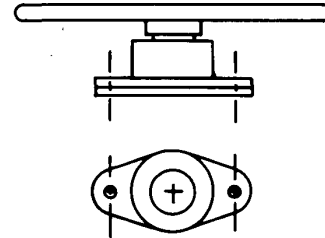
#### HANDWHEEL DIAMETER

10" - 12" - 15" - 18" - 24" - 30"

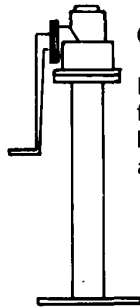
#### STEM DIAMETER

7/8" - 1" - 1-1/8" - 1-1/2" - 1-3/4" - 2"

#### TYPE 2 - HANDWHEEL LIFT



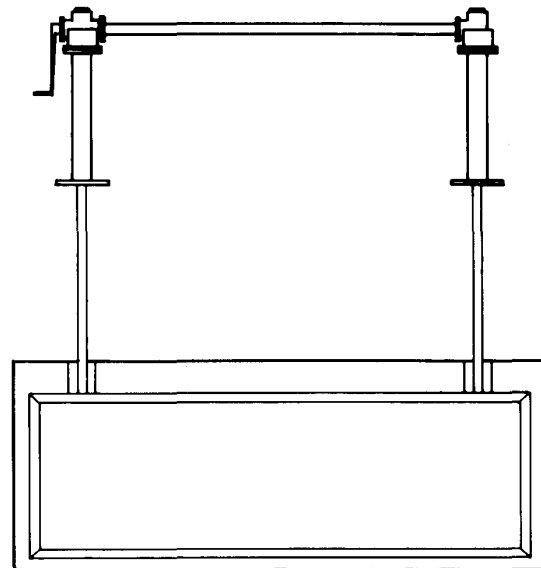
The type 2 lift is equipped with ball bearings for ease of operation on very large gates.



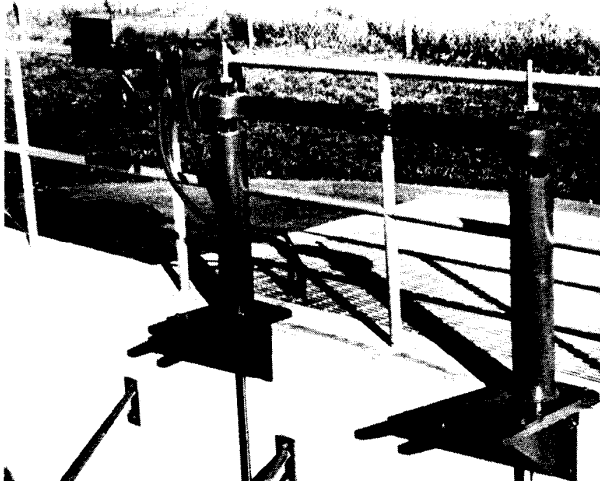
#### CRANK LIFT

Handcrank lifts have fully enclosed gear boxes with ball bearings and bronze lift nuts.

#### TANDEM LIFT FOR WIDE GATES



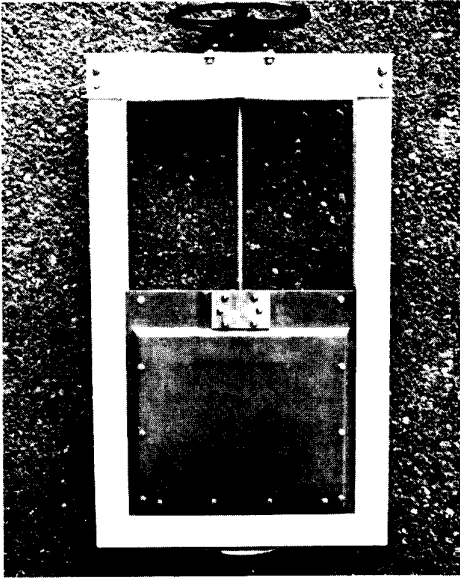
Tandem lifts are for very wide gates requiring two stems. They may be crank, handwheel, or motor operated.



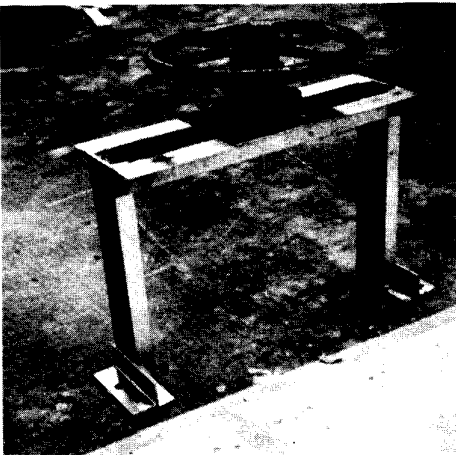
This electric motor driven tandem lift operates an overflow weir gate in an aeration tank.

# HANDWHEEL MOUNTING OPTIONS

## UNITIZED FRP GATE FRAME

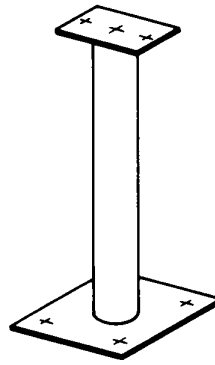


A handwheel lift on a Plasti-Fab all fiberglass gate for in-channel or end of channel mounting.



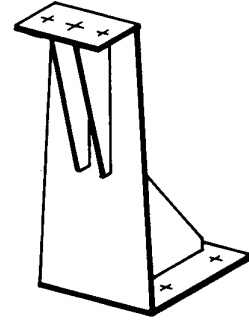
This photo shows a handwheel lift mounted on a head frame arranged to span an open channel.

## PEDESTAL



A fabricated pedestal for mounting the lift mechanism on the floor above a channel.

## OFFSET PEDESTAL

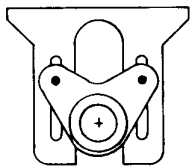


Fabricated offset pedestal mount for mounting lift at end of channel or on sidewall.

Pedestal material is epoxy coated mild steel, also, available in hot dip galvanized (2oz./sq.ft.min. per ANSI/ASTM A 123) or T-304 stainless steel.

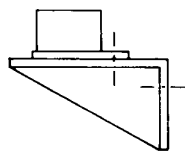
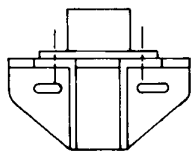


Photo showing offset electric operated slide gate lifts at the inlet of a pump station for sea water.



## STEM GUIDE

The stem guide and wall mount brackets are cast iron. The stem guide is fully adjustable and available to fit all standard stem sizes.



**Plasti-Fab**®

INC. P.O. Box 100  
Tualatin, Oregon 97062  
503/692-5460  
FAX 503/692-1145